

MONTHLY MEMBERSHIP PROGRESS REPORT

LOCATION REP OF SRI LANKA

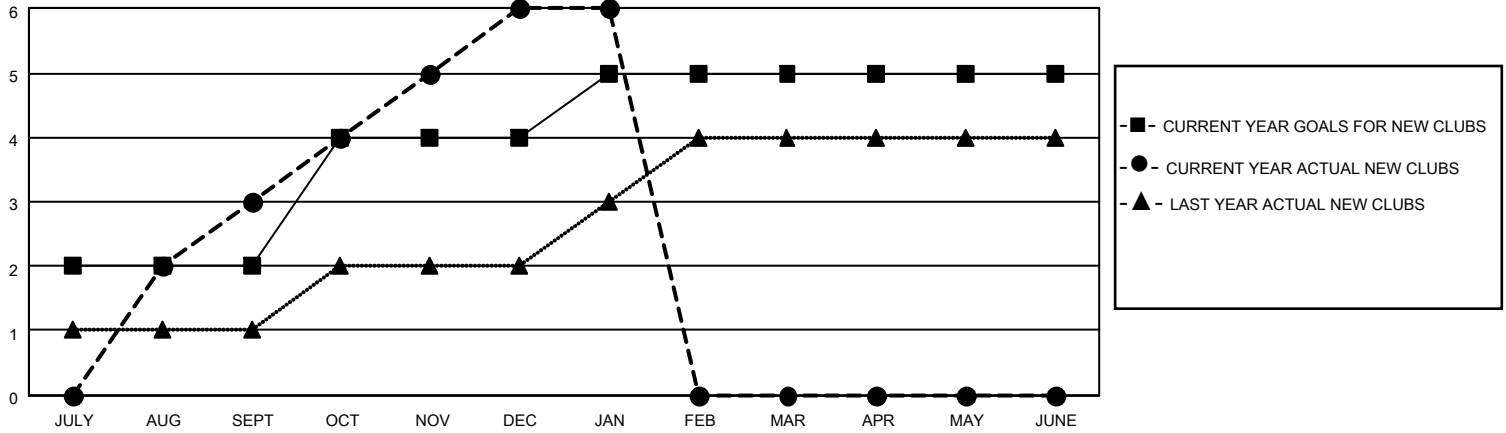
District 306 A1

Results as of: 1/31/2021

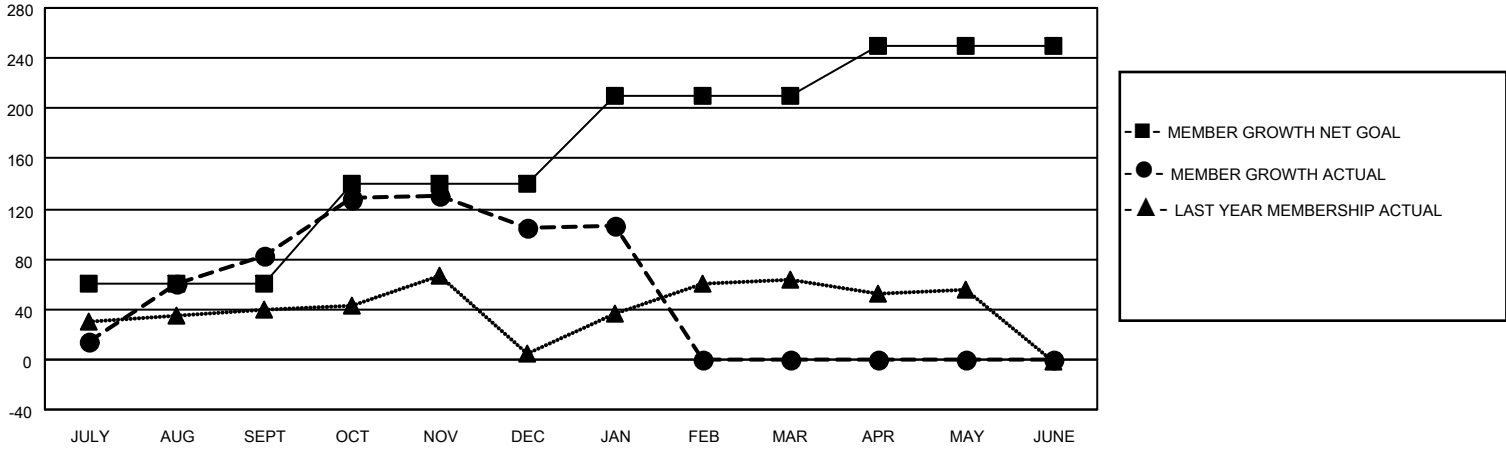
Clubs			
RESULTS FOR 2020-2021			
QUARTER	NEW CLUB GOAL	NEW CLUBS	DROPPED CLUBS
JULY/AUG/SEPT	2	3	0
OCT/NOV/DEC	2	3	0
JAN/FEB/MAR	1	0	1
APR/MAY/JUNE	0	0	0

Members			
RESULTS FOR 2020-2021			
QUARTER	MEMBER GROWTH NET GOAL	MEMBER GROWTH ACTUAL	DROPPED MEMBERS ACTUAL (including transfers)
JULY/AUG/SEPT	60	127	39
OCT/NOV/DEC	80	147	118
JAN/FEB/MAR	70	9	5
APR/MAY/JUNE	40	0	0

GOALS AND ACTUAL NEW CLUBS CUMULATIVE



GOALS AND ACTUAL MEMBERS CUMULATIVE



DROPPED CLUBS: 1	
DROPPED MEMBERS	
DECEASED	5
CLUB CANCELLED	0
OTHER	157
TOTAL	162

48 CLUBS OF 79 ADDED 1 OR MORE NEW MEMBERS

[CLICK HERE FOR CUMULATIVE MEMBERSHIP DATA](#)

<u>GENDER DISTRIBUTION</u>	
MALE	1,288 (72.20%)
FEMALE	496 (27.80%)

TOTAL FAMILY UNIT MEMBERS	617
FAMILY MEMBERS PAYING HALF DUES	338